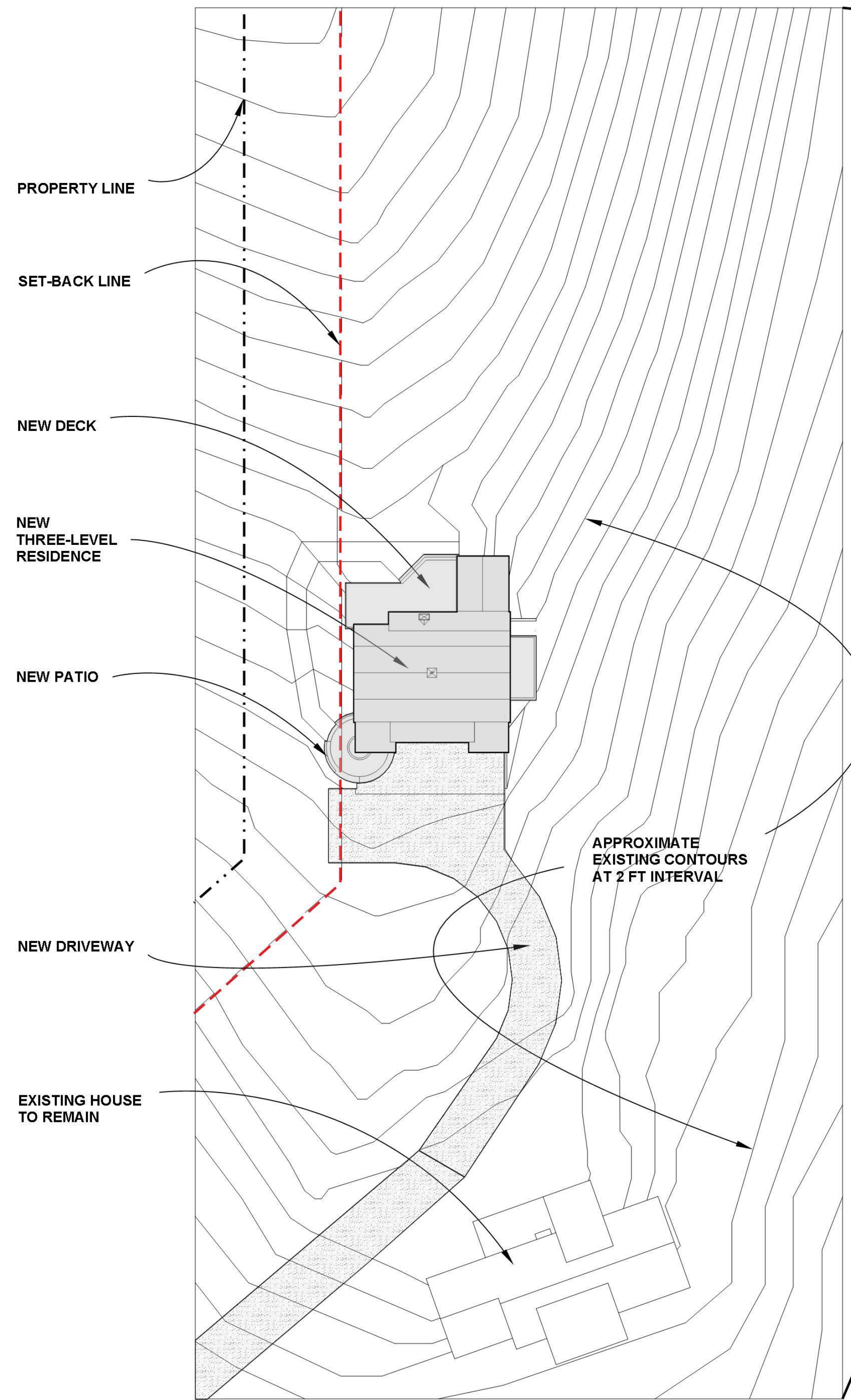


## GENERAL NOTES

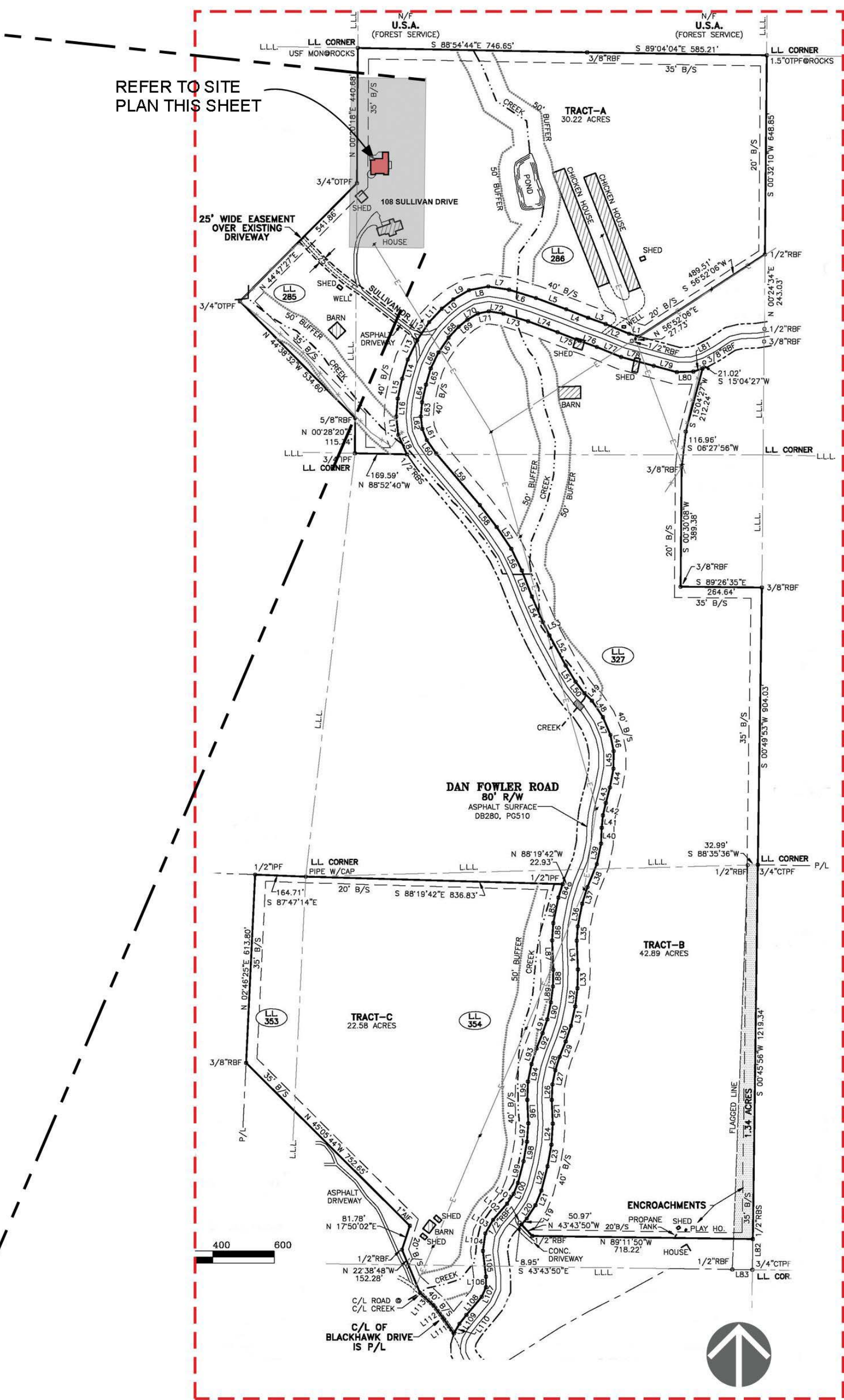
- COMPLY WITH APPLICABLE PROVISIONS OF THE STATE OF GEORGIA'S MANDATORY CODES AS ADOPTED BY THE GEORGIA DEPARTMENT OF COMMUNITY AFFAIRS (DCA), AS FOLLOWS, PLUS ANY ADDITIONAL APPLICABLE COUNTY ORDINANCES AND CODES:
  - INTERNATIONAL RESIDENTIAL CODE, 2006 EDITION, WITH THE FOLLOWING GEORGIA AMENDMENTS: (2007, 2008, 2009, 2010, 2011, 2012, 2013).
  - INTERNATIONAL FIRE CODE, 2006 EDITION, WITH THE FOLLOWING GEORGIA AMENDMENTS (2007, 2010).
  - INTERNATIONAL PLUMBING CODE, 2006 EDITION, WITH THE FOLLOWING GEORGIA AMENDMENTS (2007, 2008, 2009, 2010, 2011, 2012, 2013).
  - INTERNATIONAL MECHANICAL CODE, 2006 EDITION, WITH THE FOLLOWING GEORGIA AMENDMENTS (2007, 2008, 2010, 2011, 2012).
  - INTERNATIONAL FUEL GAS CODE, 2006 EDITION, WITH THE FOLLOWING GEORGIA AMENDMENTS (2007, 2008, 2009, 2010, 2012).
  - NATIONAL ELECTRICAL CODE, 2011 EDITION, WITH NO GEORGIA AMENDMENTS.
  - INTERNATIONAL ENERGY CONSERVATION CODE, 2009 EDITION, WITH GEORGIA SUPPLEMENTS AND AMENDMENTS FROM 2011 AND 2012.
- PROVIDE EROSION CONTROL MEASURES AS REQUIRED BY COUNTY ORDINANCE. NOTE THE FOLLOWING COUNTY REQUIREMENTS:
  - THE ESCAPE OF SEDIMENT FROM THE SITE SHALL BE PREVENTED BY THE INSTALLATION OF EROSION CONTROL MEASURES AND PRACTICES PRIOR TO, OR CONCURRENT WITH, LAND DISTURBING ACTIVITIES.
  - EROSION CONTROL IS TO BE MAINTAINED AT ALL TIMES. IF FULL IMPLEMENTATION OF THE APPROVED PLAN DOES NOT PROVIDE FOR EFFECTIVE EROSION CONTROL, ADDITIONAL EROSION CONTROL MEASURES WILL BE IMPLEMENTED TO CONTROL THE SEDIMENT SOURCE.
  - ANY DISTURBED AREA LEFT EXPOSED FOR A PERIOD OF 14 DAYS SHALL BE STABILIZED WITH MULCH OR TEMPORARY SEEDING.
- RETAIN SEPARATE VENDORS AND ENGINEERS TO DESIGN AND SPECIFY FOUNDATION DEPTHS, REINFORCING AND WIDTH, RETAINING WALL REINFORCING, WIND BRACING, MEMBER SIZING AND CONNECTIONS, TRUSS DESIGN, HVAC SYSTEMS, PLUMBING, LIGHTING AND ELECTRICAL ENGINEERING.
- INDICATED DIMENSIONS ARE TO THE FACE OF APPLIED GYPSUM BOARD OR SHEATHING, FACE OF CONCRETE, AND TOP OF SUB-FLOOR.
- CONFIRM FINAL LAYOUT OF KITCHEN WITH OWNER'S SEPARATE KITCHEN DESIGNER.

## CONTENTS

- SITE PLAN AND GENERAL NOTES
- FOUNDATION PLAN AND ISOMETRICS
- FOUNDATION SECTIONS, ELEVATIONS AND ISOMETRICS
- LOWER LEVEL PLAN AND SCHEDULES
- MIDDLE LEVEL PLAN AND SCHEDULES
- UPPER LEVEL PLAN AND SCHEDULES
- ROOF PLAN
- LOWER LEVEL REFLECTED CEILING PLAN
- MIDDLE LEVEL REFLECTED CEILING PLAN
- ELEVATIONS
- CROSS SECTION
- CROSS SECTION
- CROSS SECTION
- LONGITUDINAL SECTION



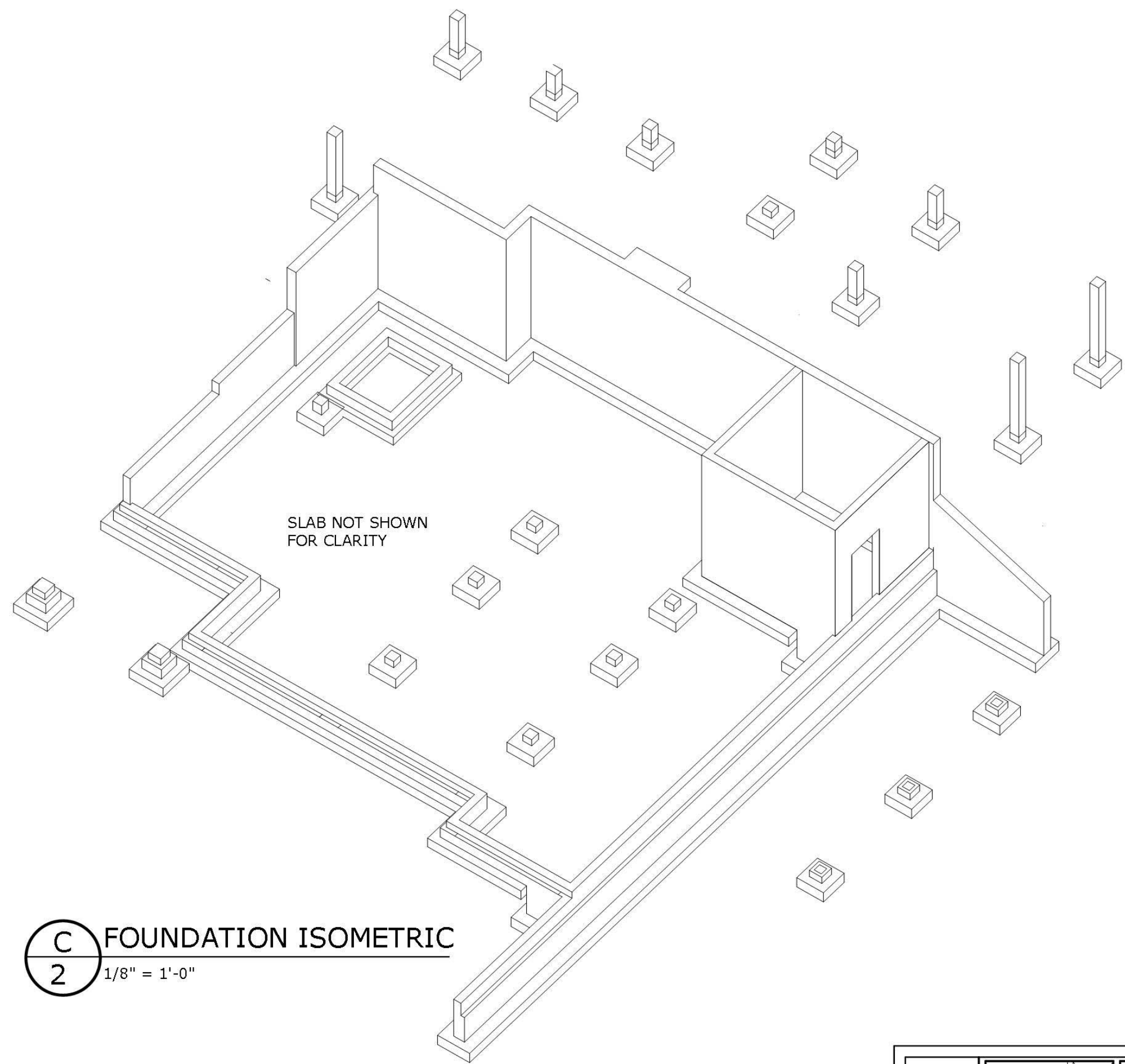
A  
1  
1" = 30'-0"



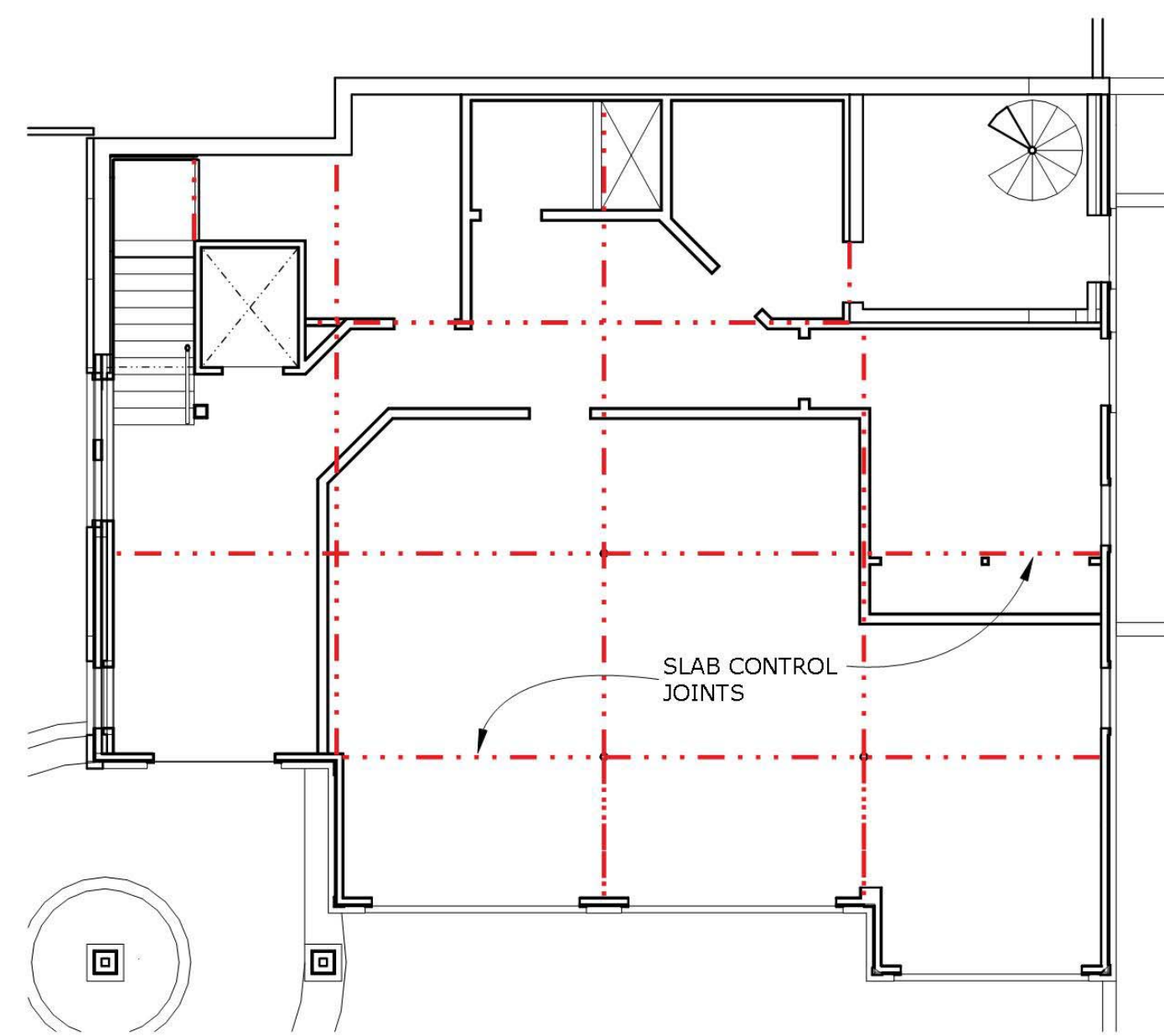
A  
1  
PROPERTY PLAN



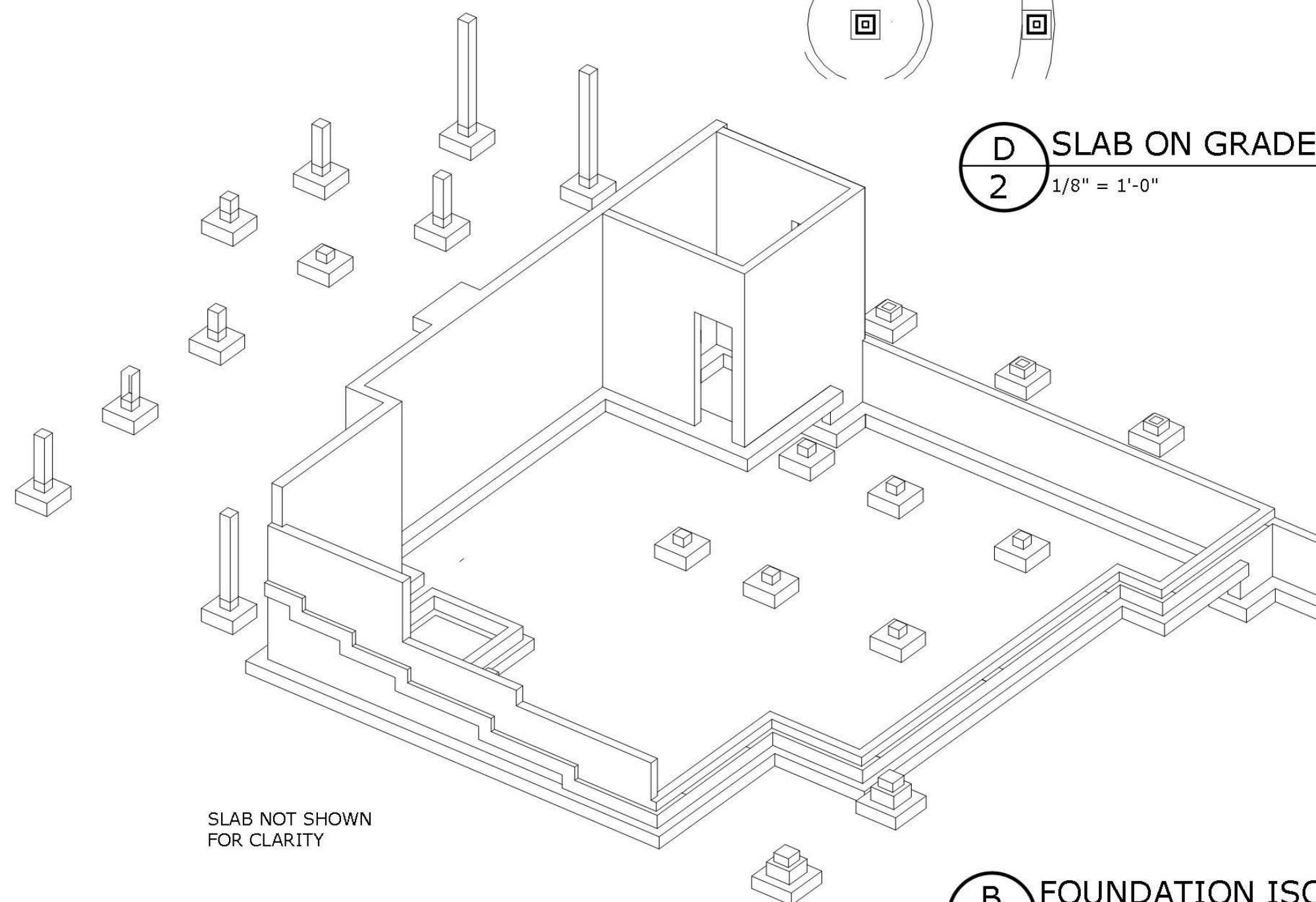
A  
1  
LOCATION PLAN



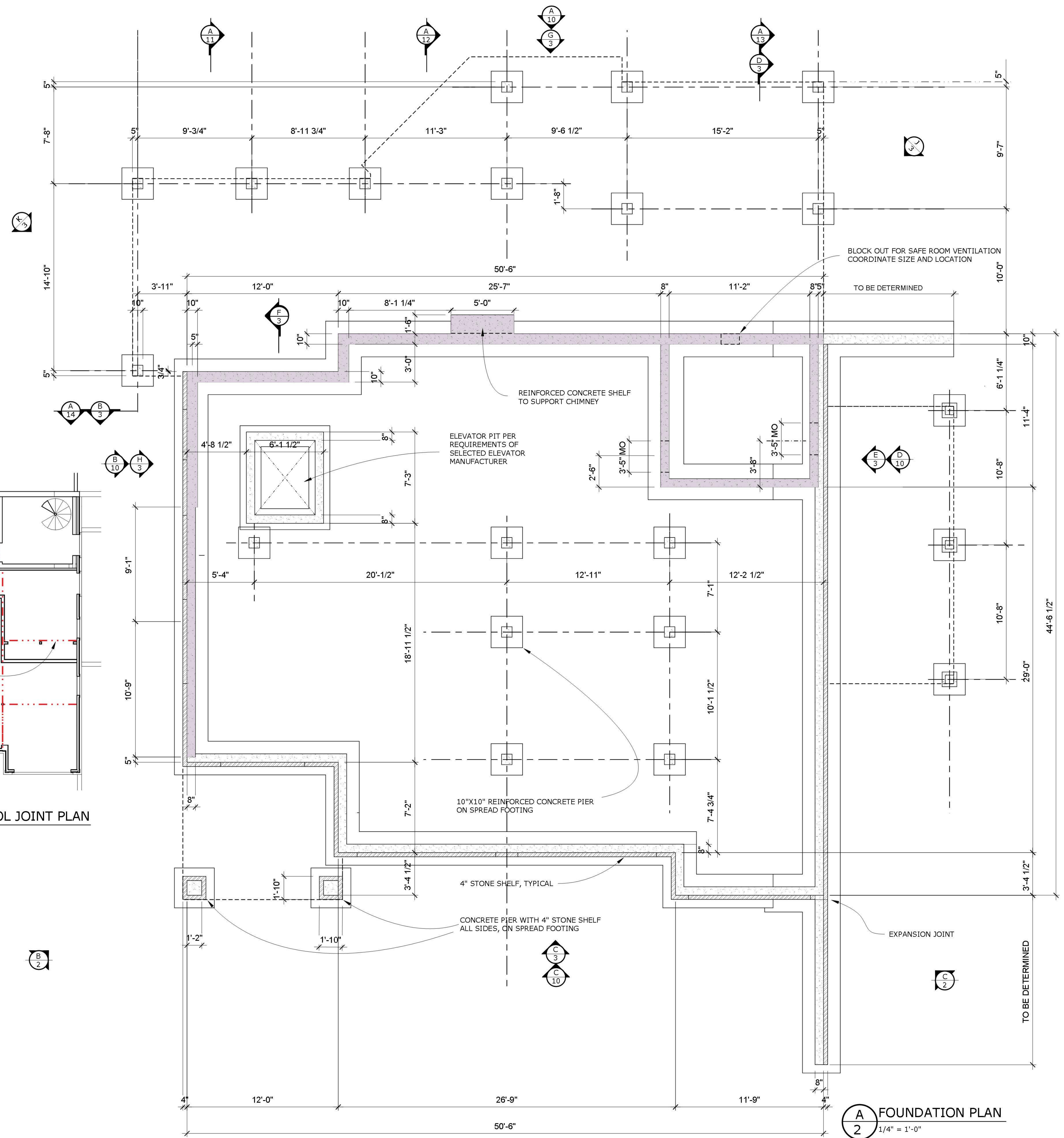
**C** FOUNDATION ISOMETRIC  
2 1/8" = 1'-0"



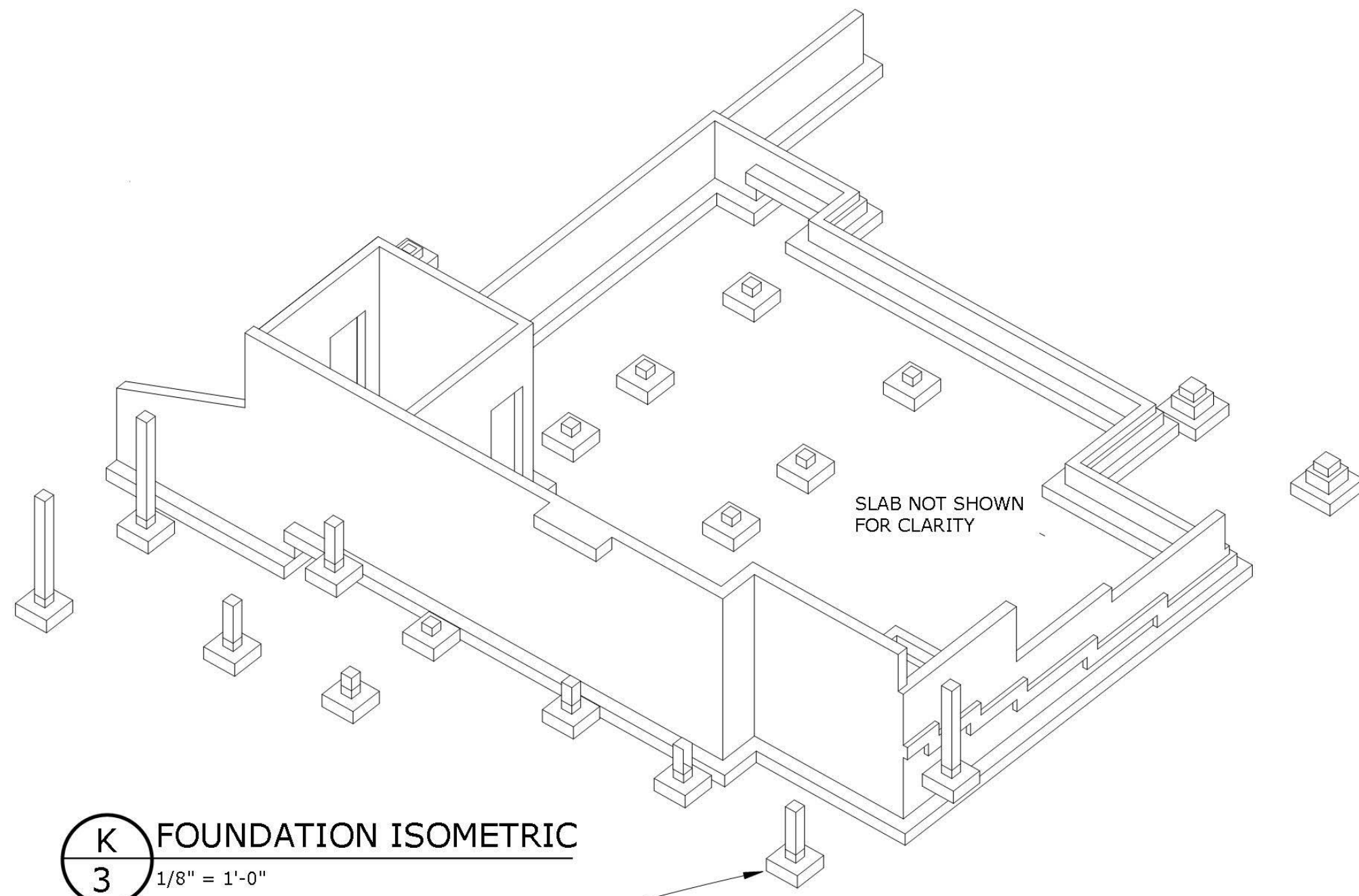
**D** SLAB ON GRADE CONTROL JOINT PLAN  
2 1/8" = 1'-0"



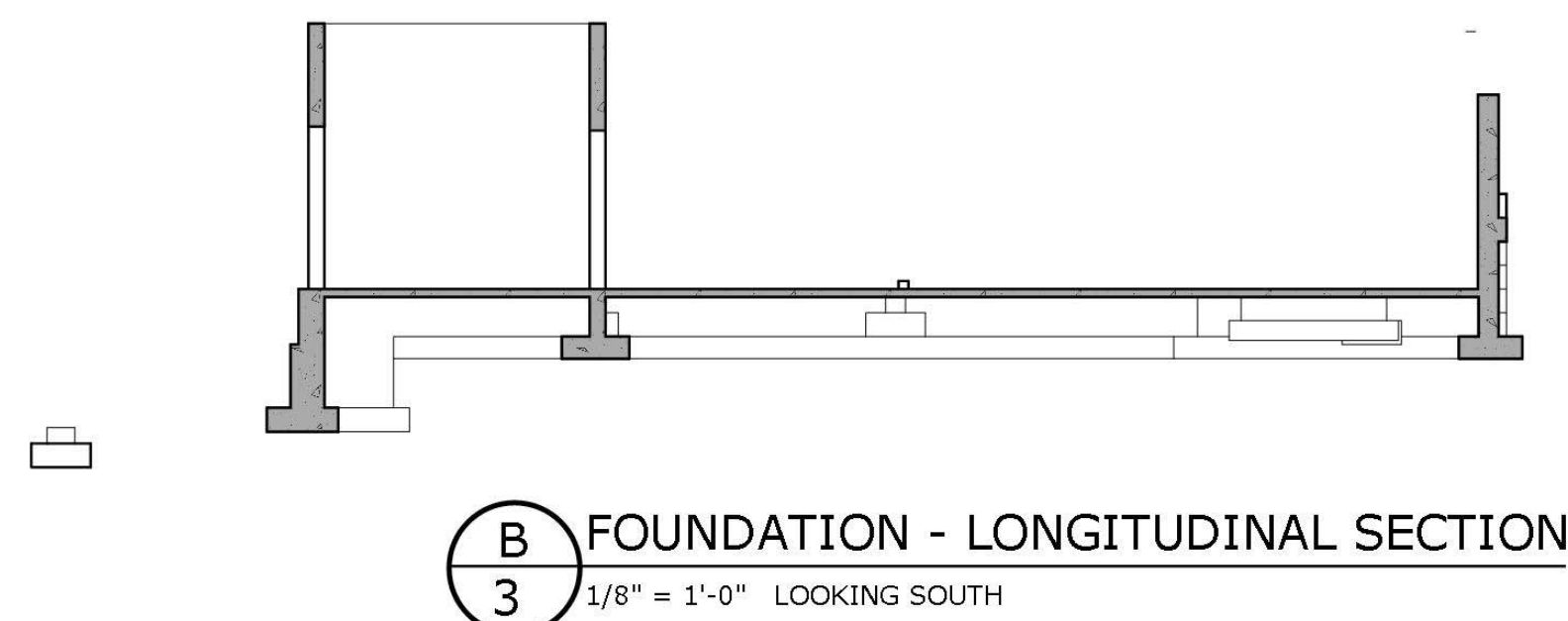
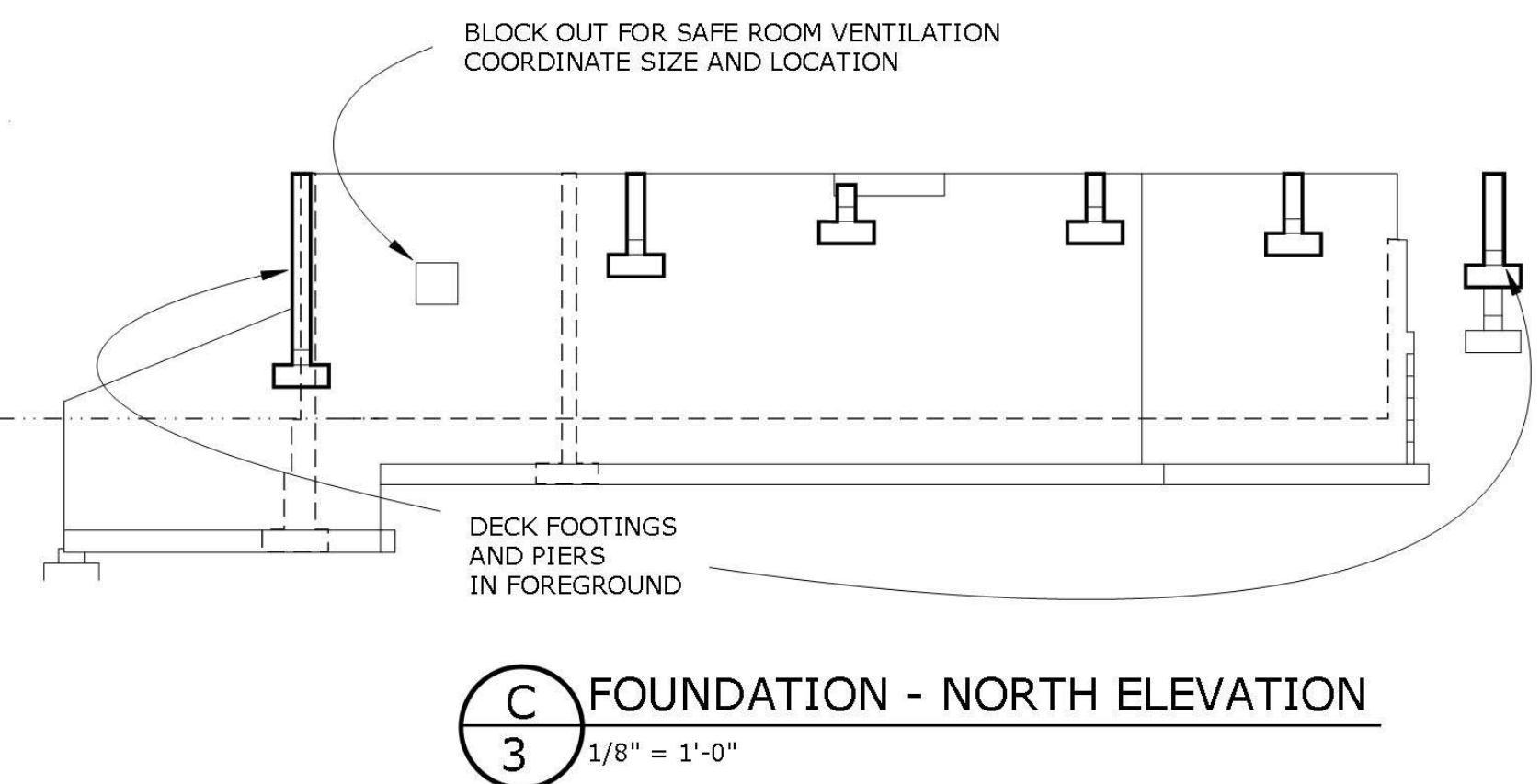
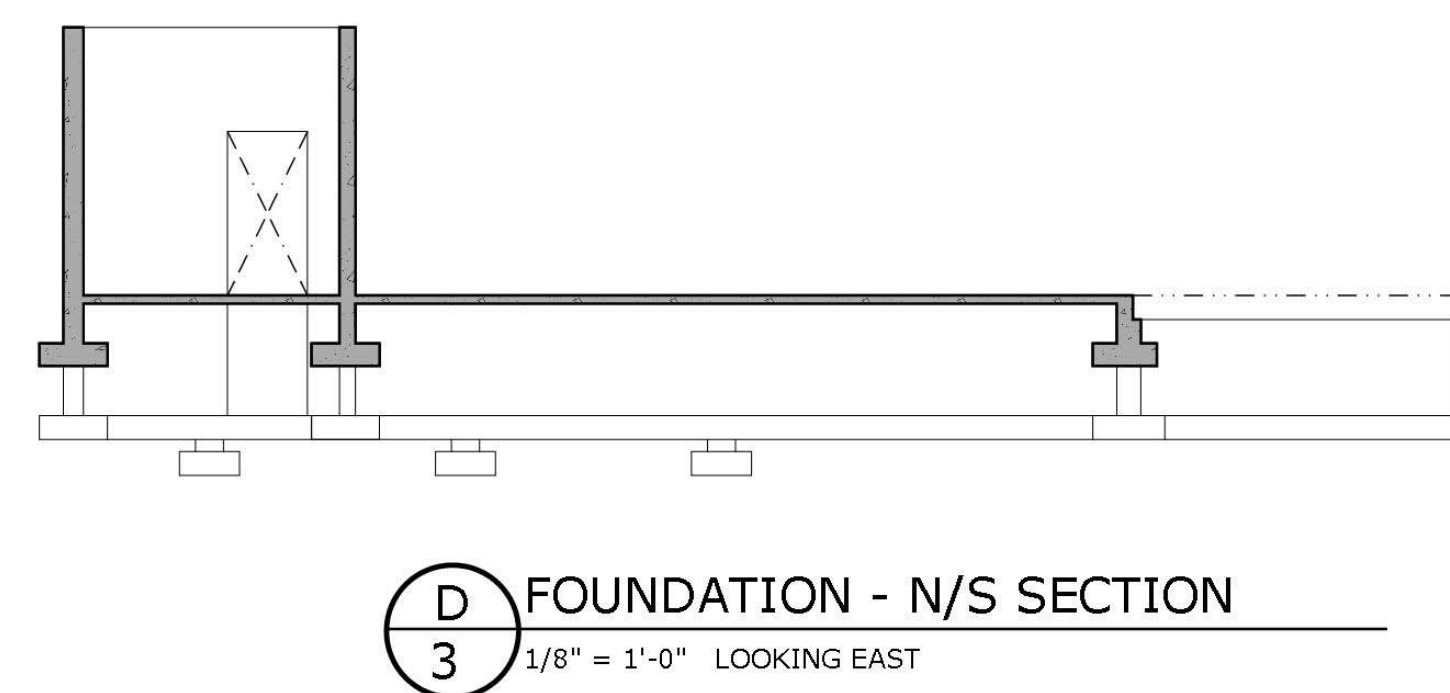
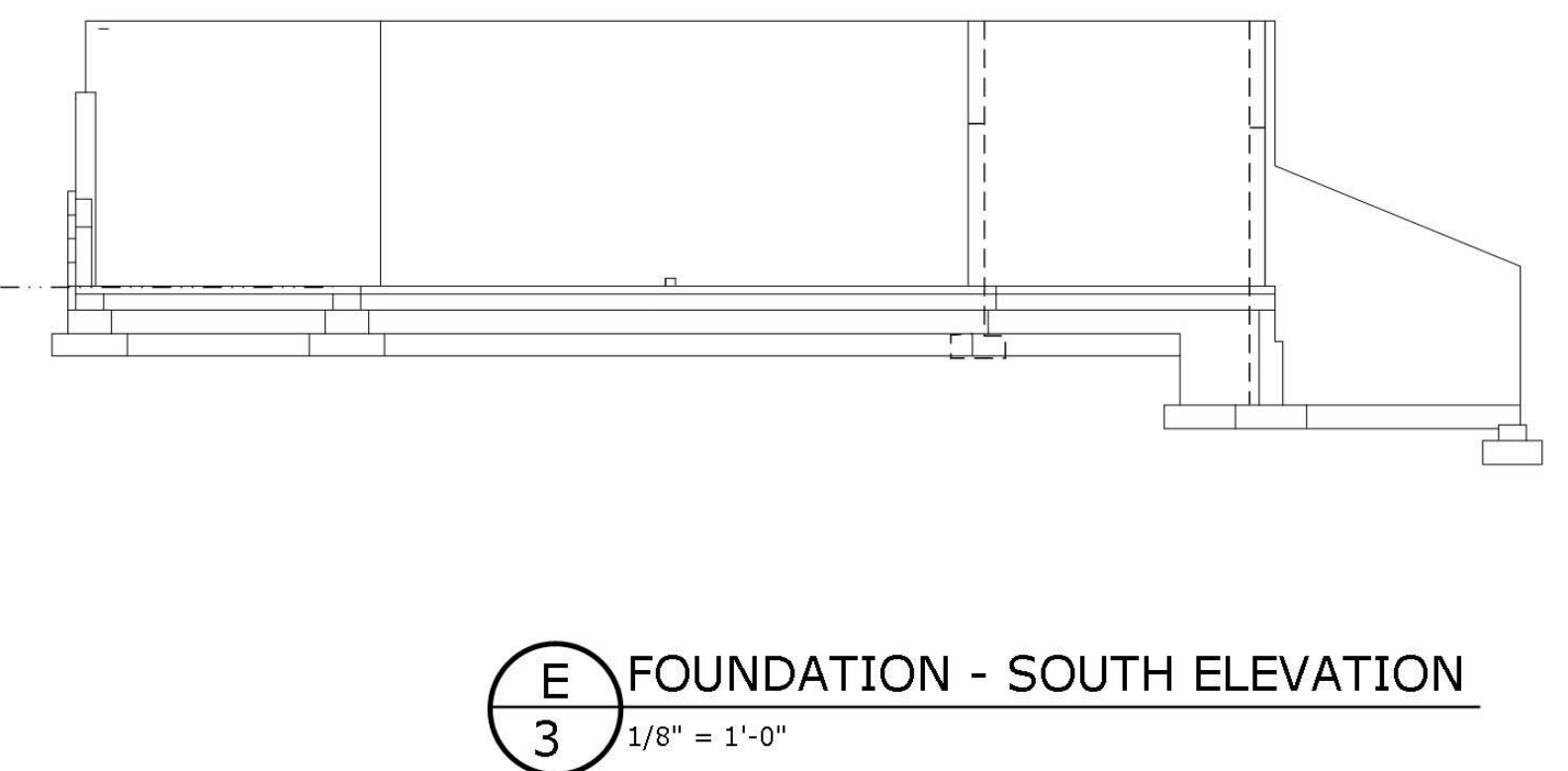
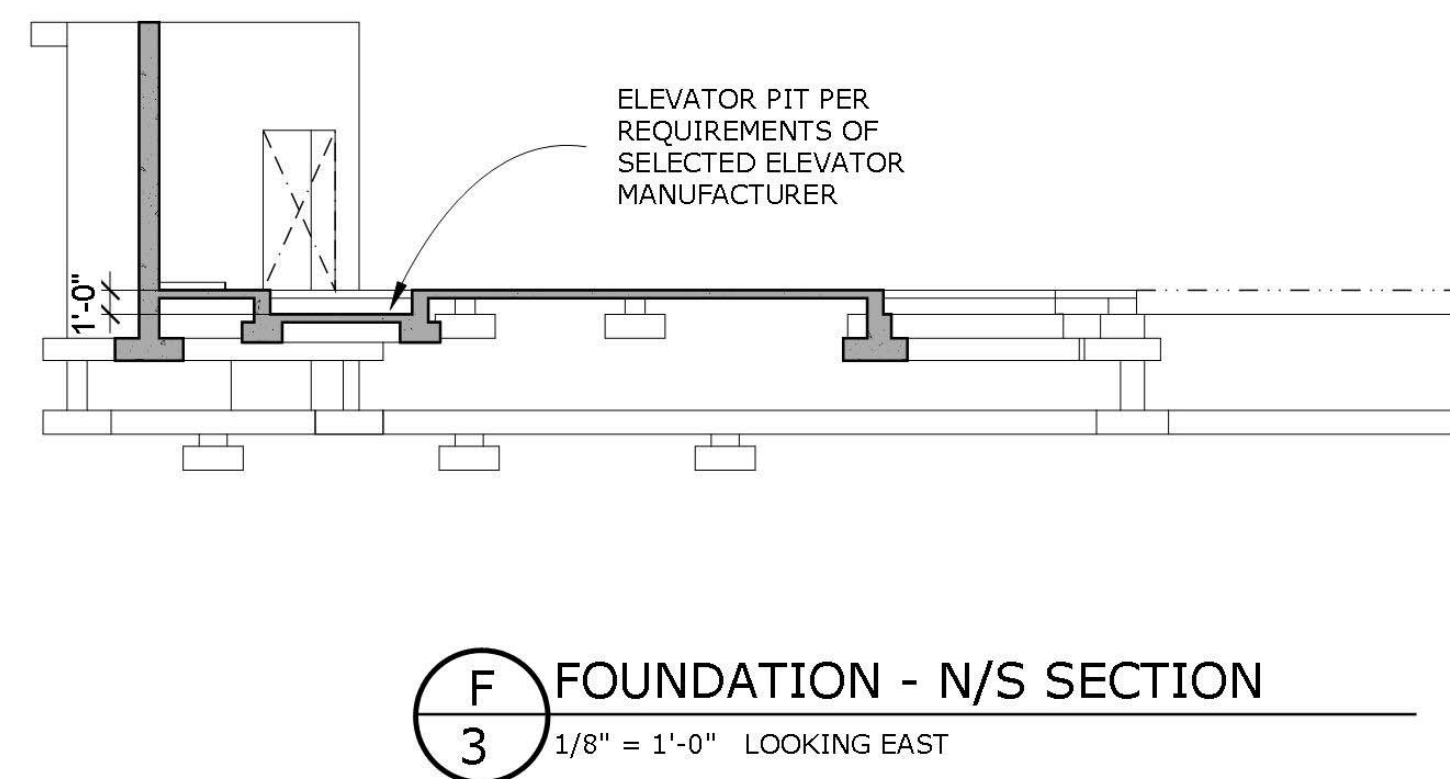
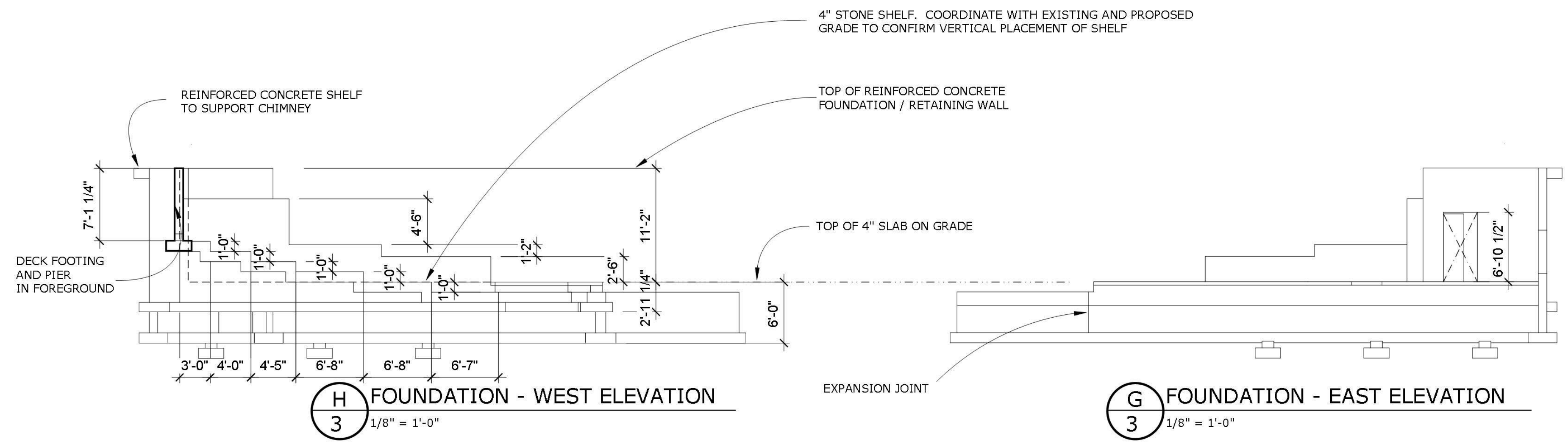
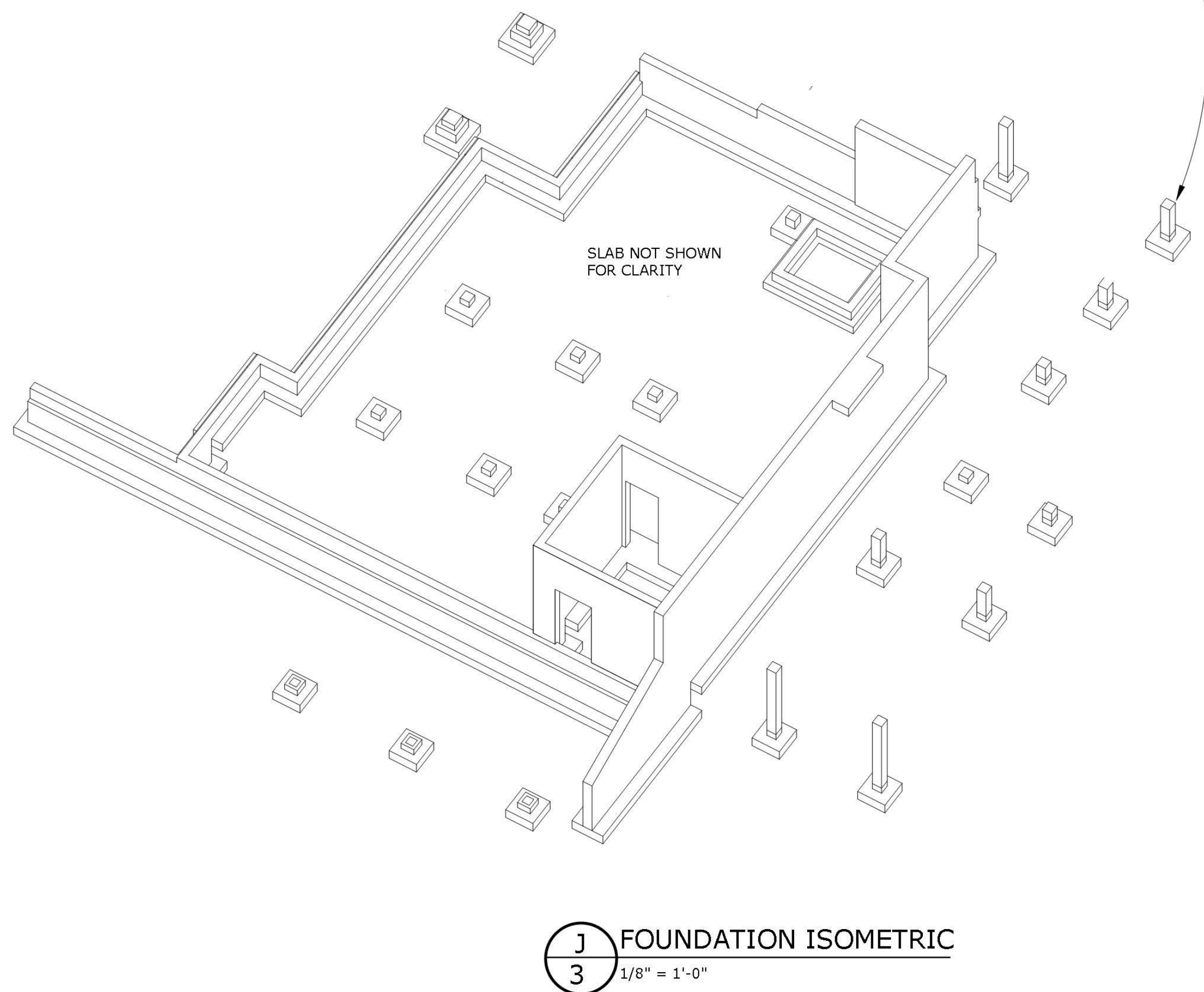
**B** FOUNDATION ISOMETRIC  
2 1/8" = 1'-0"



**A** FOUNDATION PLAN  
2 1/4" = 1'-0"



SPREAD FOOTINGS WITH REINFORCED CONCRETE PIERS SUPPORTING DECK AND PORCH. COORDINATE TOP OF PIER WITH DECK CONSTRUCTION.

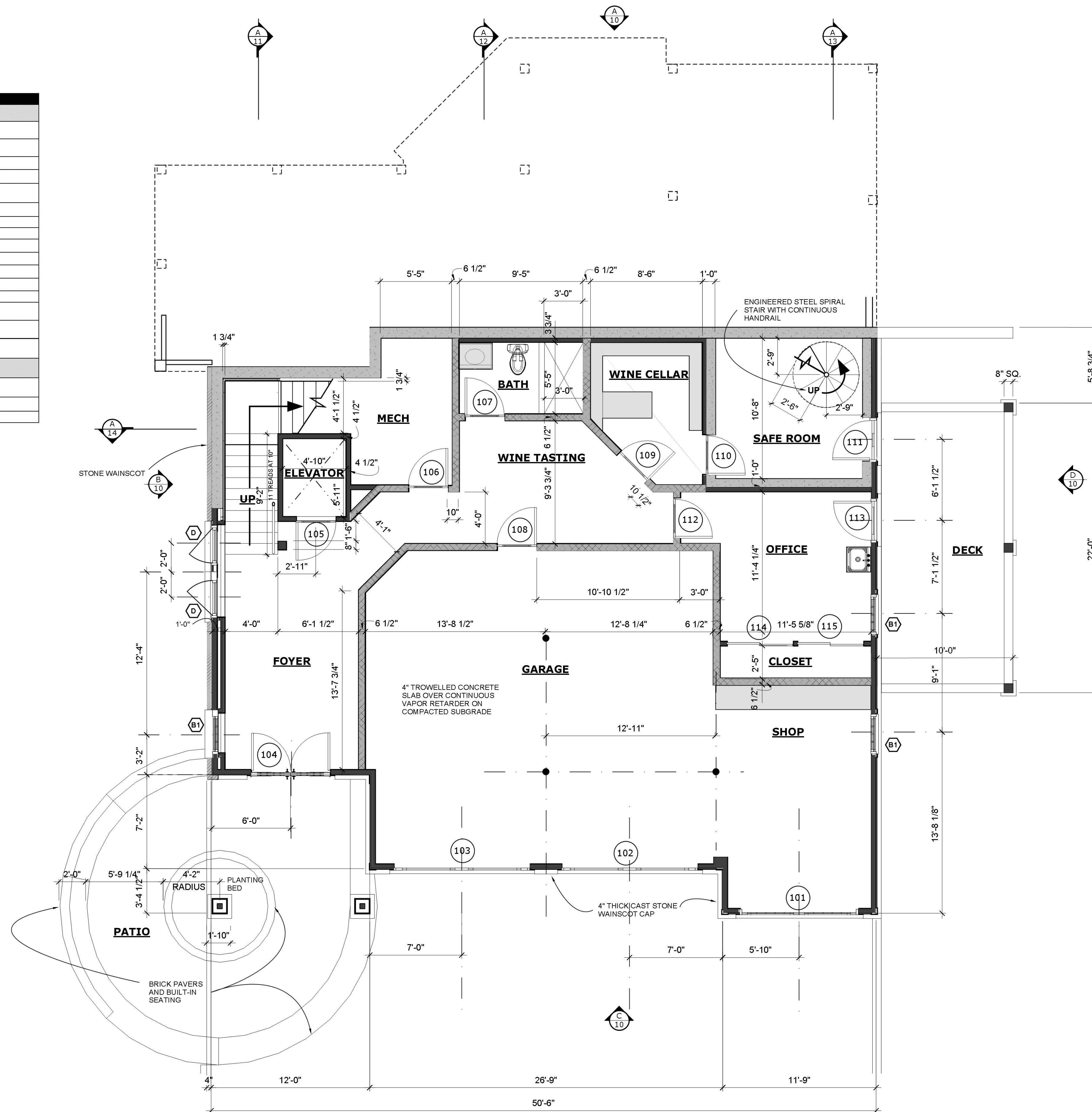


# DOOR AND WINDOW SCHEDULE

LOWER LEVEL								
DOORS								
DOOR NUMBER	CONNECTING SPACES	FIRE RATING	GLAZING	WIDTH x HEIGHT	DOOR / OPENING TYPE	DOOR MATERIAL	HARDWARE	COMMENTS
101	GARAGE TO EXTERIOR	NO	NO	10'-0" x 10'-0" SEE ELEV.	OVERHEAD ROLLUP	TBD	AUTO + MANUAL	INSULATED
102	GARAGE TO EXTERIOR	NO	NO	10'-0" x 10'-0" SEE ELEV.	OVERHEAD ROLLUP	TBD	AUTO + MANUAL	INSULATED
103	GARAGE TO EXTERIOR	NO	YES	9'-0" x 7'-0" SEE ELEV.	OVERHEAD ROLLUP	TBD	AUTO + MANUAL	INSULATED
104	POVER TO EXTERIOR	NO	TRANS ONLY	PAIR 9'-0" x 8'-0" TRANS. 8'-0" x 2'-0"	RUSTIC PANELED WITH GLAZED TRANSOM	SOLID WOOD 2"	ENTRY LOCKSET W/ KEYS, DEADBOLT	TRANS DIVIDED LITES 8 OVER 8
105	ELEVATOR	YES	NO	3'-9" x 6'-0"	FLUSH W/PANEL OVERLAY	WD PANEL OVER SOLID CORE	LOCKSET	
106	HALL TO MECHANICAL	NO	NO	3'-9" x 6'-0"	PANEL	WOOD	LOCKSET	
107	WINE TASTING TO BATH	NO	NO	2'-9" x 8'-0"	PANEL	WOOD	PRIVACY	
108	WINE TASTING TO GARAGE	YES	NO	3'-9" x 6'-0"	FLUSH W/PANEL OVERLAY	WD PANEL OVER SOLID CORE	LOCKSET	
109	WINE TASTING TO WINE CELLAR	NO	NO	3'-9" x 6'-0"	PANEL	WOOD	LOCKSET	
110	WINE CELLAR TO SAFE ROOM	YES	NO	3'-9" x 6'-0"	FLUSH W/PANEL OVERLAY	WD PANEL OVER SOLID CORE	LOCKSET	
111	EXTERIOR TO SAFE ROOM	NO	EXE	3'-0" x 7'-0"	FLUSH	INSULATED HOLLOW METAL	EXIT	NO HARDWARE ON EXTERIOR / SECURITY BUTTS
112	WINE TASTING TO OFFICE	NO	NO	3'-9" x 6'-0"	PANEL	WOOD	PRIVACY	
113	DECK TO OFFICE	NO	YES	3'-0" x 7'-0" TRANS. 6'-0" x 1'-0"	FRIBOX W/ TRANSOM LITE	ALUM GLAZ WOOD EXT. WOOD INT.	LOCKSET W/ KEYS, DEADBOLT	
114	OFFICE TO CLOSET	NO	NO	PAIR 2'-8" x 6'-8"	PANEL	WOOD	RECESSED PULLS, STOPS, ROLLERS / TRACK	BRASSING SLIDER
115	OFFICE TO CLOSET	NO	NO	PAIR 2'-8" x 6'-8"	PANEL	WOOD	RECESSED PULLS, STOPS, ROLLERS / TRACK	BRASSING SLIDER

WINDOWS						
WINDOW MARK	REQ'D EGRESS	UNIT WIDTH x HEIGHT	WINDOW TYPE	WINDOW / FRAMING MATERIAL	SCREEN	COMMENTS
B1		3'-0" x 5'-6"	OFFSET DOUBLE HUNG	TBD	YES	UPPER LITE: 2-4" HIGH W DIVIDED LITES 4 OVER 4
D		3'-9" x 4'-0"	CASEMENT	TBD	YES	



**A**  
**4** LOWER LEVEL FLOOR PLAN  
1/4" = 1'-0"

NOT FOR CONSTRUCTION

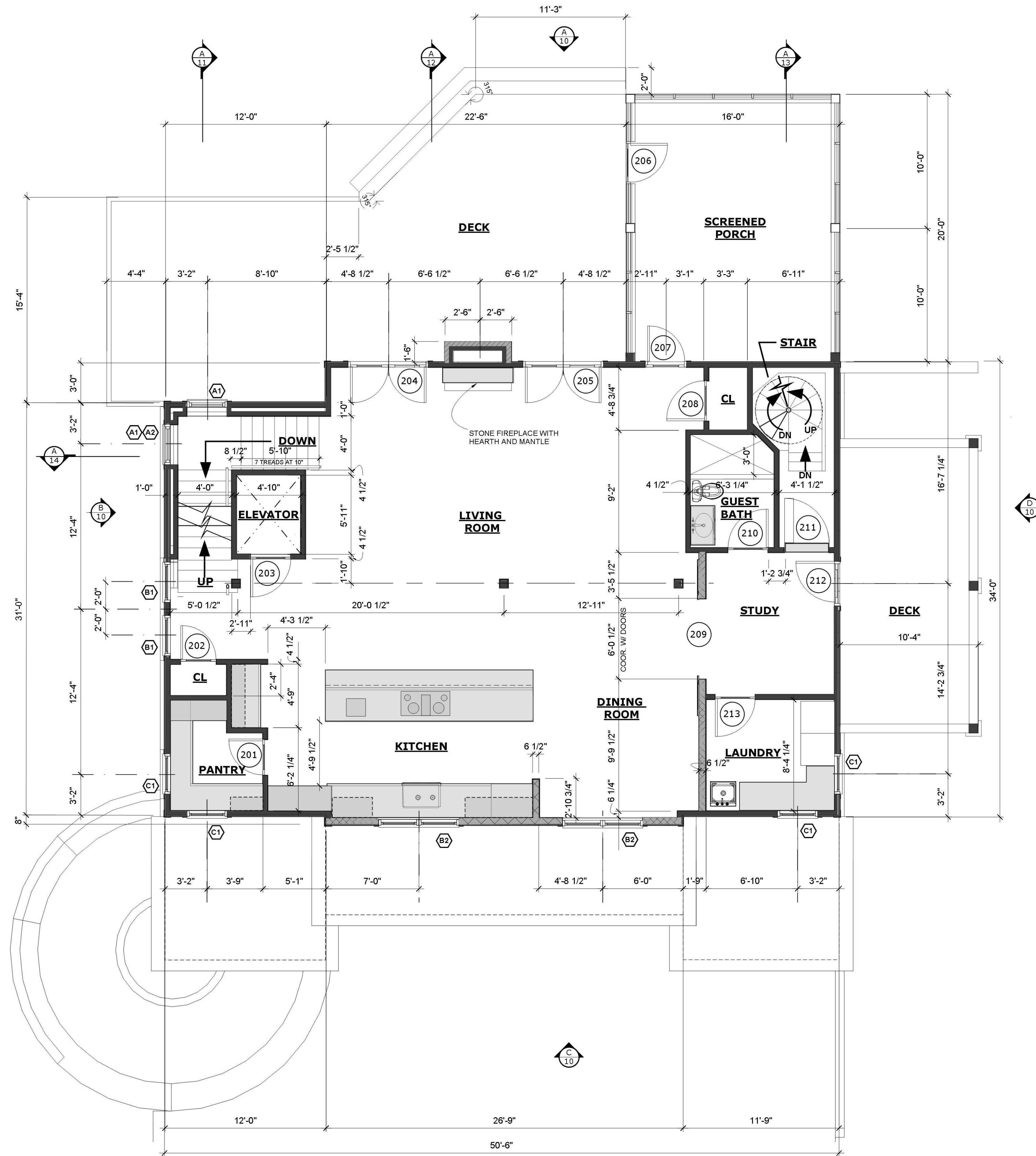
THIS DRAWING IS THE EXCLUSIVE PROPERTY OF SPIKERSTUDIO, LLC AND MAY NOT BE REPRODUCED OR USED IN WHOLE OR IN PART WITHOUT WRITTEN AUTHORIZATION FROM SPIKERSTUDIO, LLC.  
COPYRIGHT © 2015 BY SPIKERSTUDIO, LLC.

PROJECT NUMBER  
133.00

ISSUED FOR: DATE  
Final Coordination 03/12/15

# DOOR AND WINDOW SCHEDULE

MIDDLE LEVEL								
D O O R S								
DOOR NUMBER	CONNECTING SPACES	FIRE RATING	GLAZING	WIDTH x HEIGHT	DOOR / OPENING TYPE	DOOR MATERIAL	HARDWARE	COMMENTS
201	KITCHEN TO PANTRY	NO	NO	2'-4" x 6'-8"	PANEL	WOOD	PASSAGE	
202	HALL TO CLOSET	NO	NO	2'-4" x 6'-8"	PANEL	WOOD	PASSAGE	
203	ELEVATOR	YES	NO	3'-4" x 6'-8"	FLUSH W/ PANEL OVERLAY	WG PANEL OVER SOLID CORE	LOCKSET	
204	DECK TO LIVING ROOM	NO	YES	PAIR 2'-0" x 7'-0" TRAN 6'-0" x 2'-0"	FRENCH W/ TRANSGRM LITE	ALUM CLAD WOOD EXT. WOOD INT.	LOCKSET W/ KEVED DEADBOLT	TRANS: DIVIDED LITES 8 OVER 8
205	DECK TO LIVING ROOM	NO	YES	PAIR 2'-0" x 7'-0" TRAN 6'-0" x 2'-0"	FRENCH W/ TRANSGRM LITE	ALUM CLAD WOOD EXT. WOOD INT.	LOCKSET W/ KEVED DEADBOLT	TRANS: DIVIDED LITES 8 OVER 8
206	SCREENED PORCH TO DECK	NO	NO	3'-0" x 7'-0"	SCREENED UPPER, PANEL LOWER	PT WOOD	SPRING HINGES	
207	LIVING TO SCREENED PORCH	NO	YES	PAIR 2'-0" x 7'-0" TRAN 3'-0" x 2'-0"	FRENCH W/ TRANSGRM LITE	ALUM CLAD WOOD EXT. WOOD INT.	LOCKSET W/ KEVED DEADBOLT	TRANS: DIVIDED LITES 4 OVER 4
208	LIVING TO CLOSET	NO	NO	3'-4" x 6'-8"	PANEL	WOOD	PASSAGE	
209	DINING ROOM TO STUDY	NO	NO	PAIR 3'-6" x 6'-8"	PANEL	WOOD	BARK DOOR SLIDER	OVERHEAD WALL MOUNTED SLIDE RAIL
210	STUDY TO GUEST BATH	NO	NO	3'-4" x 6'-8"	PANEL	WOOD	PRIVATE	
211	STUDY TO STAIR	NO	NO	3'-4" x 7'-0" w/ (7) DEEP ADJ. SHELVES	CUSTOM CONCEALED	WOOD	CONCEALED	SWINGING SHELF WITH HIDDEN HARDWARE
212	DECK TO STUDY	NO	YES	PAIR 2'-0" x 7'-0" TRAN 3'-0" x 2'-0"	FRENCH W/ TRANSGRM LITE	ALUM CLAD WOOD EXT. WOOD INT.	LOCKSET W/ KEVED DEADBOLT	TRANS: DIVIDED LITES 4 OVER 4
213	STUDY TO LAUNDRY	NO	NO	3'-0" x 6'-8"	PANEL	WOOD	PASSAGE	
W I N D O W S								
WINDOW MARK	RECD EGRESS	WIDTH x HEIGHT	WINDOW TYPE	WINDOW MATERIAL	SCREEN	COMMENTS		
A1		3'-4" x 3'-0"	FIXED	TBO	NO			
A2		3'-4" x 3'-0"	AWNING	TBO	YES			
B1		2'-0" x 5'-8"	OFFSET DOUBLE HUNG	TBO	YES	UPPER LITE: 2'-0" HIGH W/ DIVIDED LITES 4 OVER 4		
C1		3'-0" x 6'-8"	OFFSET DOUBLE HUNG	TBO	YES	UPPER LITE: 2'-0" HIGH W/ DIVIDED LITES 4 OVER 4		
C2		GANGED PAIR 3'-0" x 4'-6" EA	OFFSET DOUBLE HUNG	TBO	YES	UPPER LITE: 2'-0" HIGH W/ DIVIDED LITES 4 OVER 4		



**A**  
**5** MIDDLE LEVEL FLOOR PLAN  
1/4" = 1'-0"

NOT FOR CONSTRUCTION

THIS DRAWING IS THE EXCLUSIVE PROPERTY OF SPIKERSTUDIO, LLC AND MAY NOT BE REPRODUCED OR USED IN WHOLE OR IN PART WITHOUT WRITTEN AUTHORIZATION FROM SPIKERSTUDIO, LLC.

COPYRIGHT © 2016 BY SPIKERSTUDIO, LLC.

PROJECT NUMBER  
133.00

ISSUED FOR: DATE  
Final Coordination 03/12/15